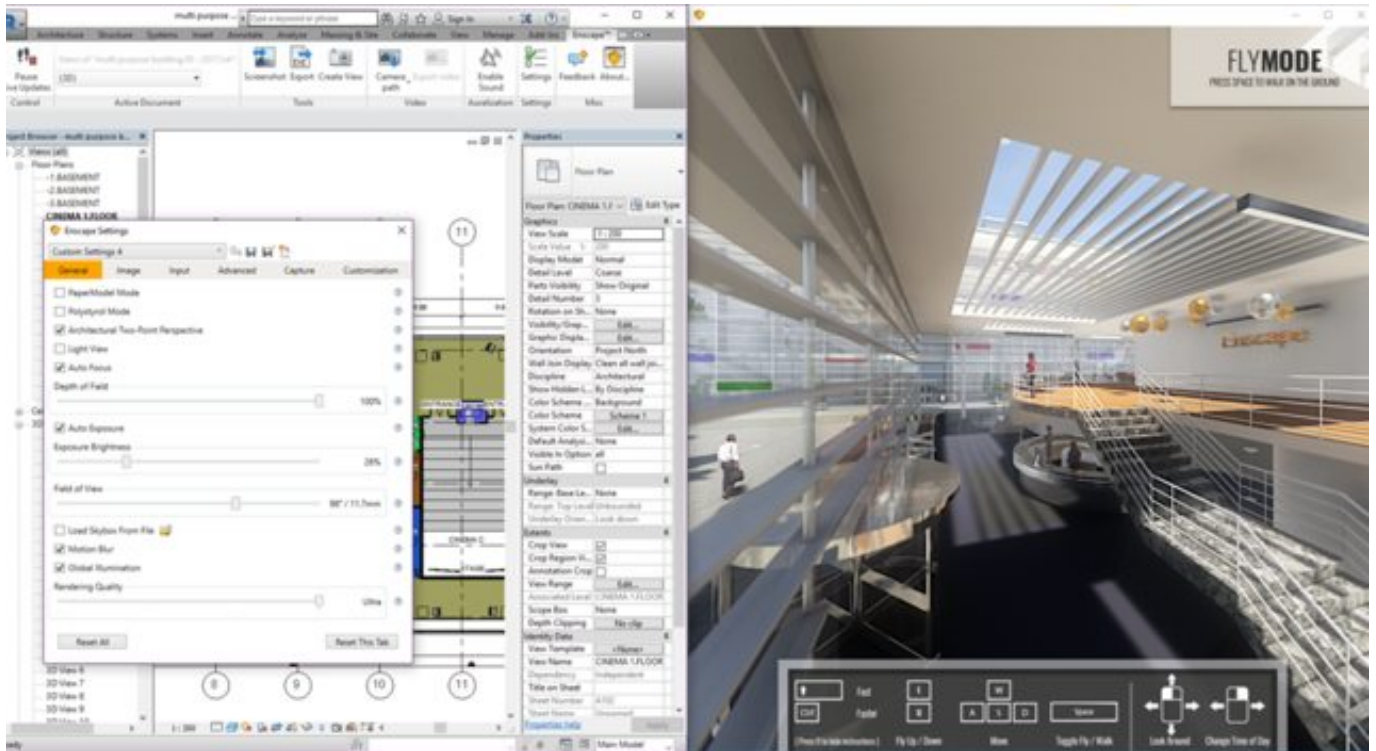


Enscape 3d revit crack t



DOWNLOAD: <https://byltly.com/2ikvts>

Download

Revit is the choice for many because of its scalability, ease of use, cost-effectiveness, and quality. Since many projects involve a large number of structures in one project, Revit is a cost-effective method for preparing projects. Revit is also user friendly because it is free. Revit also has many add-ons and plugins that can be used to enhance its capabilities. Revit has the ability to connect to other Revit files and even linked data, which can be very useful in a large project. If a project is scaled, there are no "new" elements added into the model which can affect the project's cost. Revit also provides a "hidden" workspace which is often used to work on a specific part of a project at a time without affecting the design in the main workspace. History While Revit was initially introduced in 2002 by Autodesk as an online application, Revit 2000 was first released in 1998 for use on Revit Mac OS version 5.3 (Mac G5 and Intel Macs), Revit 2000 was also available for Windows 3.11 and Microsoft Windows 2000. The first version of Revit for Windows was released in 2005. The last version of Revit was released in 2014 with the release of Revit Architecture 2014 and Revit Structure. With the release of Revit Architecture 2014 and Revit Structure, Revit was able to perform automatic workflow execution. Functionality Revit has the ability to do many things. It can be used to create assemblies, insert elevation layers, and create detailing information. It can also be used to document a project, either as a presentation or in a database. There are many add-ons and plugins available for Revit that enhance its capabilities. It also allows for the ability to model the building information that is currently in the project. Revit can also link to other projects or linked data, which can be very useful in a large project. Revit is free to use, but there are many add-ons available. Features The most useful and popular functions are: Revit architecture - Exploring and creating and editing architectural models, including multi-storey buildings. Revit MEP - Exploring and creating and editing mechanical, electrical, and plumbing models. Revit BIM - Exploring and creating and editing BIM models that model building information and 82157476af

[elipsescadahardkeycrack](#)
[SolSuite 2009 V9.5 Serials By ChattChitto Download Pc](#)
[alexrutherfordempireofthemoghulseriespdfdownload](#)